

# TAILORED EXTRUSION

As far as we're concerned, the options for extrusion have no limits. Not just because of the three extrusion presses we have at Nedal. Or the extraordinary properties of aluminium. What makes the range of possibilities immeasurably diverse, is the enthusiasm with which our employees constantly search for specifically tailored solutions that help you - our customer - move forward.

Aluminium is sustainable, lightweight, extremely strong, has high formability and is easy to form and shape. Equally significant is the fact that the raw material needed for aluminium is abundant and that aluminium is 100% recyclable without loss of quality.

By combining the properties of aluminium with a perfectly aligned production process, we are capable of offering a vast range of options. This does not end once the aluminium profiles have been manufactured. Nedal can also offer mechanical processing and surface treatments.



## Mechanical processing and surface treatment options

- Milling
- Drilling
- Punching
- Bending & curving
- (Mitre) sawing
- Varnishing
- Friction Stir Welding
- Brushing
- Polishing
- Anodizing
- Welding
- (Powder) coating

**Nedal**<sup>®</sup>  
ALUMINIUM



## In 6 steps, your product from our factory

Of course, we also have 'off the shelf' products, but we truly excel in tailored solutions. That is our strength.

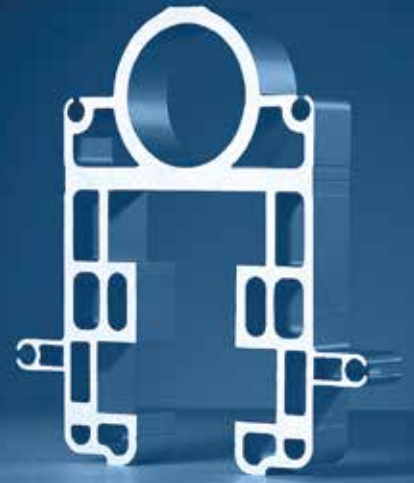
At Nedal, we prefer to think in solutions that meet your aluminium needs. In 6 steps, we always provide perfect solutions. Allowing you to deliver excellent products.

- Step 1** Introduction and idea
- Step 2** Concept & feasibility
- Step 3** Design
- Step 4** Prototype & testing
- Step 5** Series production
- Step 6** Packaging and delivery

# SAFETY & QUALITY

A safe and optimized production process is just as important to us as the quality of our products. Our standards are high. Our processes are continuously monitored and improved. This is how we maintain safe, sustainable and efficient working practices and consistently deliver the quality you expect.

Nedal has earned various certificates and meets all legal requirements for extrusion and lighting columns. In addition to general certificates regarding quality management (ISO 9001), environmental management (ISO 14001) and occupational health & safety (ISO 18001), Nedal is also accredited with certifications (including IATF 16949) for specific applications, such as the automobile industry.



Nedal Aluminium is a certified company and a subsidiary of the Hunter Douglas Group

## Certificates



### ISO 9001

This certificate is an international standard for quality management. ISO 9001 is used to assess whether an organization is capable of consistently providing products and services that meet customer and regulatory requirements and the demands of the organization itself. The ISO 9001 conditions furthermore provide useful starting points for establishing and structuring a quality management system.



### ISO 14001

This certificate is the standard for environmental management and is developed by the International Organisation for Standardization (ISO).



### OHSAS 18001

Occupational Health and Safety Assessment Series (OHSAS) is an international standard for management systems focusing on safety and health. OHSAS 18001 supports Nedal in employing safe and healthy working practices.



### CE

Nedal Aluminium holds 3 different CE certificates issued by Kiwa Netherlands: 1 for extrusion profiles in accordance with EN 15088, 1 for our lighting columns in accordance with EN 14,6 and 1 for our road sign poles in accordance with EN 12899.



### IATF 16949

This certificate is a supplement to the ISO 9001 certificate. IATF 16949 was drafted by the International Automotive Task Force (IATF) and the Technical Committee of ISO. This certificate applies to the design, development, production, installation and maintenance of automobile-related products.



### TÜV Technischer Überwachungsverein Hessen

The TÜV Technischer Überwachungsverein Hessen certificate confirms that Nedal Aluminium meets the requirements of the Pressure Vessel Directive 2014/68/EU.

For a full list of certificates, please see [nedal.com](http://nedal.com).



**More information?**  
Please contact us.

Extrusion & Lighting columns

**80 YEARS**  
specialists in aluminium



### Nedal Aluminium B.V.

Groenewoudsedijk 1, 3528 BG Utrecht  
P.O. Box 2020, 3500 GA Utrecht, The Netherlands

**T** +31 (0)30 2925 711  
**E** [info@nedal.com](mailto:info@nedal.com)

[nedal.com](http://nedal.com)

